

HAMBLETON DISTRICT COUNCIL

Report To: Cabinet
10 June 2014

Subject: PUBLIC OPEN SPACE, SPORT AND RECREATION ACTION PLANS

Topcliffe Ward
Portfolio Holder for Customer and Leisure Services: Councillor Mrs B S Fortune

1.0 PURPOSE AND BACKGROUND:

1.1 The Council's policy is to endorse Public Open Space, Sport and Recreation Sub Area Action Plans to provide a more strategic and efficient process for allocating future Section 106 monies (see Annex A) either from Local Development Framework allocations or windfall sites.

1.2 The purpose of this report is to endorse the refreshed Public Open Space, Sport and Recreation Action Plan for Dalton.

1.3 The Council's policy states that each Action Plan must comply with the following:

- Ascertain what is already provided
- Consider public open space, sport and recreation projects that are included in the local Community or Parish Plan to identify existing need
- Includes consultation with community groups that manage public open space, sport or recreation facilities to identify future need
- Includes consultation with the District Council Elected Member(s) and the local Area Partnership
- Meet the obligations of Public Open Space, Sport and Recreation Supplementary Planning Document
- Is signed off by a Council Director

The Action Plan detailed in 1.2 meet this criterion.

1.4 Copies of the Action Plans detailed in 1.2 are available at Annex B.

2.0 LINK TO COUNCIL PRIORITIES:

2.1 This links primarily to the Health priority of the Council.

3.0 RISK ASSESSMENT

3.1 Risk has been considered as part of this report and there are no risks identified as a result.

4.0 FINANCIAL IMPLICATIONS:

4.1 The main method of delivery of Section 106 allocations is to passport external funding from developers to community groups. Funds will not be committed or released to organisations until the Council has received the monies from the developer.

4.2 Action Plans will be subject to 12 monthly reviews to determine progress to ensure that the projects are still relevant and viable.

5.0 LEGAL IMPLICATIONS:

5.1 There is a legal responsibility upon the Council to ensure this funding is used in a way consistent with the individual Section 106 Agreements.

6.0 SECTION 17 CRIME AND DISORDER ACT 1998:

6.1 Some of these projects have the potential to reduce crime and disorder through providing diversionary activity for young people.

7.0 EQUALITY/DIVERSITY ISSUES:

7.1 All projects in receipt of this funding should have equal access and be available for the general public to use.

8.0 RECOMMENDATION(S):

8.1 It is recommended that the Public Open Space, Sport and Recreation Action Plan in Annex B be endorsed.

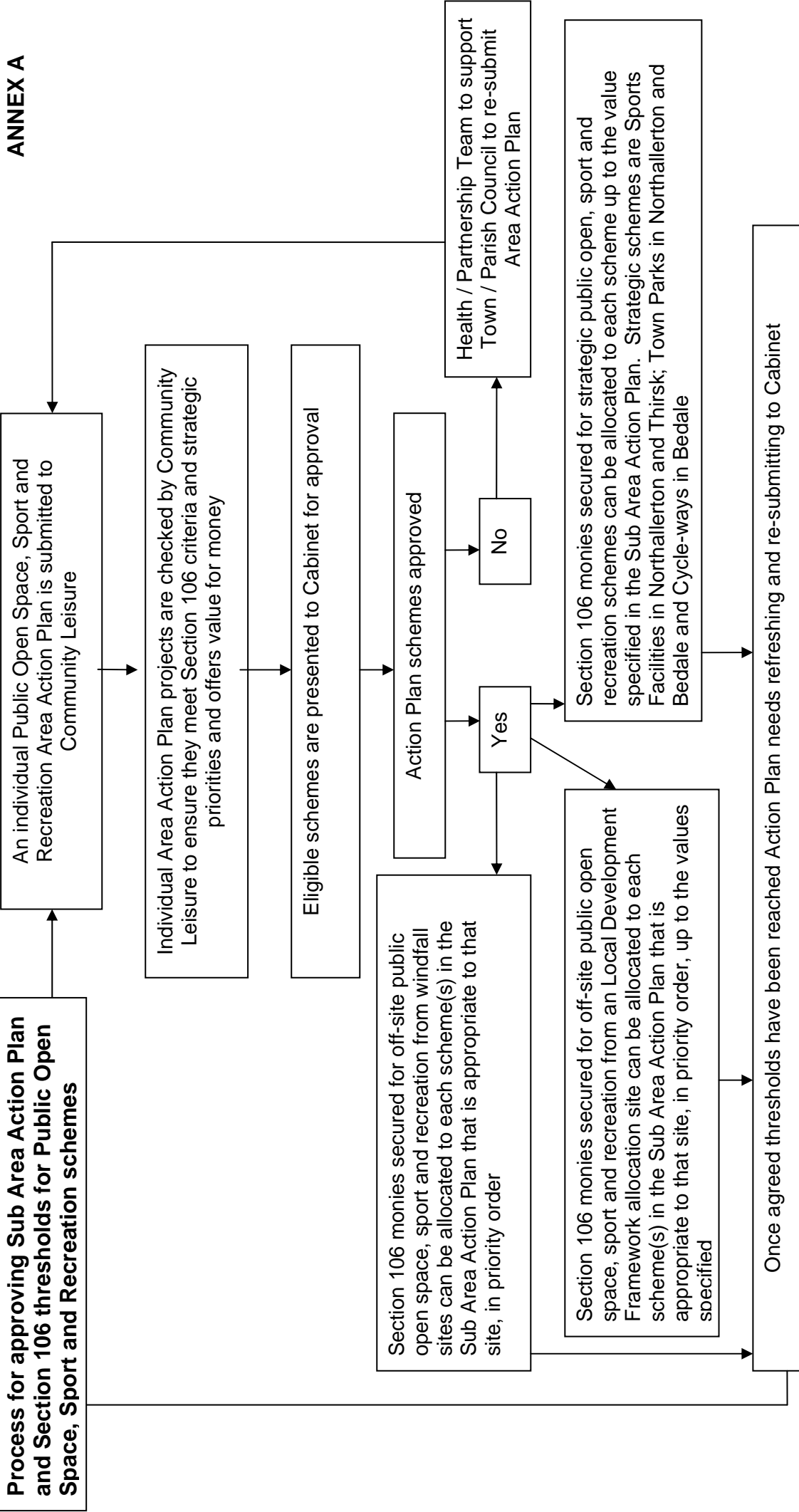
DAVE GOODWIN

Background papers: Hambleton Local Development Framework – Open Space, Sport and Recreation Supplementary Planning Document

Author ref: DRG

Contact: Dave Goodwin
Director Customer and Leisure Services
01609 767147

ANNEX A



PUBLIC OPEN SPACE, SPORT AND RECREATION ACTION PLAN – DALTON (REFRESH)

What POS / Sport / Recreation facilities do you have already?	Managing organisation and contact details	Future actions	How do you know there is a need for this project?	Estimated cost (£)	Community Priority (1 = highest priority)
Football Pitch	Parish Council	Piped drainage scheme with sand grooves to the field. Typical costs include levelling, all preliminaries, setting up, transport, installation of pipe drainage scheme, installation of sand grooves, application of fertilizers, seeding and making good	To enable the facility to be useable/sustainable	£42,350	1
Car park and services	Parish Council	We will also have to pay for water and electricity to be connected and will also have to create a car parking area	To enable the facility to be useable/sustainable	£38,000	2
Recreation field	Parish Council	All weather surface for 7-a-side football (and other sports) situated in the recreation field. Goalposts are already insitu.	To enable 7-a-side football (and other sports) to be played at all time	£45,000	3
Pavilion	Parish Council	Cost of erecting a building for use as a pavilion to include all windows, doors, locks, internal walls, showers etc.	To encourage more use of the facilities	£30,000	4